



1<sup>ST</sup> ALTO Cherokee

**E** to Clar.

**F** CLAR. SOLO (AD LIB.)

to Alto

**H** 2<sup>ND</sup> Trpt.

to Clar.

**J** repeat till fade away  
CLAR.

36

# 15 CHEROKEE

2nd E♭ Alto Sax

Composed and Arr. by  
RAY NOBLE

Moderato (not Slow)  
3rd Trpt.

**A** CHORUS (opt. Vocal)

**B**

**C**

**D**

For Vocal only

2 ALTO Cherokee

E

F

1.

2.

G

H

3rd Trpt.

TO CLAR.

J Repeat till fade away CLAR.

# 15 CHEROKEE

1st B $\flat$  Tenor Sax

Composed and Arr. by  
RAY NOBLE

Moderato (not Slow)

**A** CHORUS (opt. Vocal)

1st Trom.

**B**

**C**

**D**

For Vocal only

1st Tenor Cherokee

E

F

1.

2.

G

H 1st Trom.

TO CLAR.

J Repeat till fade away CLAR.

2nd Bb Tenor Sax

36

Charlie Barnett's Biggest Record Success

# 15 CHEROKEE

Composed and Arr. by  
RAY NOBLE

Moderato (not slow)

2nd Trom.

Musical staff with notes and accidentals, including a sharp sign and a flat sign.

## A Chorus (Opt. Vocal)

Musical staff with notes and a slur, starting with the dynamic marking *mf legato*.

Musical staff with notes and a slur.

Musical staff with notes and a slur.

Musical staff with notes and a slur.

Musical staff with notes and a slur.

Musical staff with notes and a slur.

Musical staff with notes and a slur.

Musical staff with notes and a slur, starting with the dynamic marking *mf*.

for vocal only

Musical staff with notes and a slur.

2 tawon Cherokee

E

Musical notation for section E, featuring a piano accompaniment with a 3-measure rest.

F

Musical notation for section F, including a first ending bracket and a 1/2 measure rest.

G

Musical notation for section G, featuring a melodic line with a sharp sign.

H

2nd Trom.

Musical notation for section H, labeled "2nd Trom."

To Clar.

Musical notation for section H, labeled "To Clar."

J

Clar. (Repeat till fade away)

Musical notation for section J, labeled "Clar. (Repeat till fade away)"



Charlie Barnet's Biggest Record  
**15** CHEROKEE

Composed and Arr. by  
RAY NOBLE

E♭ Baritone Sax

**36**

Moderato (not Slow)

2nd Tpt

Musical staff for 2nd Tpt, starting with a treble clef and a key signature of one sharp (F#). The staff contains a melodic line with various note values and rests.

**A** CHORUS (Opt. Vocal)  
Soli

Musical staff for Chorus A, marked *mf legato*. It features a long, flowing melodic line with a slur over the first four measures.

Continuation of the musical staff for Chorus A, showing the second half of the long melodic line.

Musical staff for Chorus B, continuing the melodic line with a slur over the first four measures.

Continuation of the musical staff for Chorus B, showing the second half of the long melodic line.

Musical staff for Chorus C, continuing the melodic line with a slur over the first four measures.

Continuation of the musical staff for Chorus C, showing the second half of the long melodic line.

Musical staff for Chorus D, marked *mf*. It features a complex melodic line with many beamed notes and a slur over the first four measures.

For Vocal only

Continuation of the musical staff for Chorus D, showing the second half of the complex melodic line.

Bazi Chexokoe

**F**

**H**

**J** CLAR.

# 15 CHEROKEE

1st Trumpet

# 36

*Moderato (not slow)*

Composed and Arr. by  
RAY NOBLE

CUP MUTE

mf

**A** CHORUS  
Opt. Vocal

16

**B** CUP MUTE

**C**

16

**D** OPEN

mf CUP MUTE

For Vocal only

Tpt 1 Cherokee

Musical notation for the first system, featuring a melody on a treble clef staff and a bass clef staff with rhythmic accompaniment.

**E** **F**

Musical notation for the second system, including a treble clef staff with a rest and a triplet, and a bass clef staff with a 16-measure rest.

Solo (ad lib)  
CUP MUTE

Musical notation for the third system, a treble clef staff with a series of quarter notes.

Musical notation for the fourth system, a treble clef staff with a series of quarter notes.

**G** 16

Musical notation for the fifth system, including a treble clef staff with a rest and a 16-measure rest, and a bass clef staff with a 16-measure rest.

**H** HARMON MUTE

Musical notation for the sixth system, a treble clef staff with a series of quarter notes.

Musical notation for the seventh system, a treble clef staff with a series of quarter notes.

Musical notation for the eighth system, a treble clef staff with a series of quarter notes.

**J** Very soft accented legato

Musical notation for the ninth system, a treble clef staff with a series of quarter notes.

Repeat till fade away

Musical notation for the tenth system, a treble clef staff with a series of quarter notes.

Musical notation for the eleventh system, a treble clef staff with a series of quarter notes.

# 15 CHEROKEE

Composed and Arr. by  
RAY NOBLE

2nd Trumpet

*moderato (not slow)*  
CUP MUTE

36

**A** CHORUS Opt. Vocal 16

**B** CUP MUTE

**C** 16

**D** OPEN

*mf*  
CUP MUTE

For Vocal only

# 2 +pt Cherokee

**I**

**F** HAT

**H** HARMON MUTE

**J** Very soft accented legato

Repeat till fade away

# 36

Charlie Barnett's Biggest Record Success

## 15 CHEROKEE

Composed and Arr. by  
RAY NOBLE

3rd Trumpet

*Moderato (not slow)*

CUP MUTE

Musical staff for section A, starting with a treble clef, a common time signature, and a key signature of one sharp (F#). The notation includes a dynamic marking of *mf* and a *CUP MUTE* instruction. The staff contains several measures of music, including a whole note chord with a sharp sign.

**A** CHORUS Opt. Vocal

16

An empty musical staff with a treble clef, intended for the 16-measure duration of section A.

**B** CUP MUTE

Musical staff for section B, featuring a treble clef and a common time signature. The notation includes a *CUP MUTE* instruction and consists of four measures of music.

Musical staff for section B, continuing the notation from the previous staff.

Musical staff for section B, continuing the notation from the previous staff.

Musical staff for section B, continuing the notation from the previous staff.

**C**

16

An empty musical staff with a treble clef, intended for the 16-measure duration of section C.

**D** OPEN

Musical staff for section D, featuring a treble clef and a common time signature. The notation includes a dynamic marking of *mf* and a *CUP MUTE* instruction. It consists of four measures of music.

CUP MUTE

For Vocal only

Musical staff for section D, continuing the notation from the previous staff.

Musical staff for section D, continuing the notation from the previous staff.

Tpt 3 Cherokee

**E** 3 **F** HAT

1. 1/2

2 **G** 16

**H** HARMON MUTE

**J** Very soft accented legato

Repeat till fade away



# 15 CHEROKEE

4th Trumpet

# 36

Moderato (not slow)  
CUP MUTE

Composed and Arr. by  
RAY NOBLE

**A** *mf* **CHORUS** *Opt. Vocal*

16

**B** CUP MUTE

**C**

16

**D** OPEN

*mf* CUP MUTE

For Vocal only

# Tpt 4 Cheekokee

**E**

**F**

HAT

**G**

**H** HARMON MUTE

**J** Very soft accented legato

Repeat till fade away

# 15 CHEROKEE

Composed and Arranged by  
RAY NOBLE

1st Trombone

# 36

Moderato (not slow)

CUP MUTE

Musical staff for 1st Trombone, starting with a treble clef and a key signature of one flat. The staff contains a series of notes and rests, including a half note G4, a quarter note A4, and a half note B4, followed by a series of eighth notes and quarter notes with various accidentals.

**A** *mf* CHORUS (opt. Vocal)

CUP MUTE

Musical staff for Chorus section A, starting with a box labeled 'A'. It contains a series of chords and notes, including a half note G4, a quarter note A4, and a half note B4, followed by a series of eighth notes and quarter notes with various accidentals.

Musical staff for Chorus section A, continuing the previous staff with a series of eighth notes and quarter notes with various accidentals.

Musical staff for Chorus section A, continuing the previous staff with a series of eighth notes and quarter notes with various accidentals.

Musical staff for Chorus section A, continuing the previous staff with a series of eighth notes and quarter notes with various accidentals.

**C** OPEN

Free obbligato

Musical staff for section C, starting with a box labeled 'C'. It contains a series of notes and rests, including a half note G4, a quarter note A4, and a half note B4, followed by a series of eighth notes and quarter notes with various accidentals.

Musical staff for section C, continuing the previous staff with a series of eighth notes and quarter notes with various accidentals.

Musical staff for section C, continuing the previous staff with a series of eighth notes and quarter notes with various accidentals.

**D**

*mf*  
Cup Mute

For Vocal only

Musical staff for section D, starting with a box labeled 'D'. It contains a series of notes and rests, including a half note G4, a quarter note A4, and a half note B4, followed by a series of eighth notes and quarter notes with various accidentals.

Musical staff for section D, continuing the previous staff with a series of eighth notes and quarter notes with various accidentals.

Tbn 1 Cherokee

E

F HAT

G

H HARMON MUTE

J Very soft accented legato

# 15 CHEROKEE

2nd Trombone

# 36

Composed and Arr. by  
RAY NOBLE

Moderato (not slow)

CUP MUTE

Musical staff with notes and rests, including a dynamic marking of *mf* and a *CUP MUTE* instruction.

**A** *mf*  
CHORUS Dpt. Vocal

16

Musical staff with a long horizontal line, indicating a rest or a specific performance instruction.

**B** CUP MUTE

Musical staff with notes and rests, including a *CUP MUTE* instruction.

Musical staff with notes and rests.

Musical staff with notes and rests.

Musical staff with notes and rests.

**C**

16

Musical staff with a long horizontal line, indicating a rest or a specific performance instruction.

**D** OPEN

Musical staff with notes and rests.

*mf*  
CUP MUTE

For Vocal only

Musical staff with notes and rests, including a *mf* dynamic marking and a *CUP MUTE* instruction.

Musical staff with notes and rests.

Musical staff with notes and rests.

Tbn 2 *Cherukae*

**E**

**F** HAT

**G** 16

**H** HARMON MUTE

**J** Very soft unaccented legato  
Repeat till fade away

# 36

3rd Trombone

Charlie Barnett's Biggest Record Success

## 15 CHEROKEE

Composed and Arr. by  
RAY NOBLE

Moderato (not slow)

CUP MUTE

Musical staff with notes and dynamics. The staff is in 2/4 time. The notes are: quarter rest, quarter note G4, quarter note A4, quarter note B4, quarter note C5, quarter note B4, quarter note A4, quarter note G4, quarter note F4, quarter note E4, quarter note D4. Dynamics include *mf* and *mp*.

**A** CHORUS Opt. Vocal 16

Musical staff with a long horizontal line indicating a 16-measure rest.

**B** CUP MUTE

Musical staff with notes and dynamics. The staff is in 2/4 time. The notes are: quarter rest, quarter note G4, quarter note A4, quarter note B4, quarter note C5, quarter note B4, quarter note A4, quarter note G4, quarter note F4, quarter note E4, quarter note D4. Dynamics include *mf* and *mp*.

**C** 16

Musical staff with a long horizontal line indicating a 16-measure rest.

**D** OPEN

*mf* CUP MUTE

for Vocal only

Musical staff with notes and dynamics. The staff is in 2/4 time. The notes are: quarter note G4, quarter note A4, quarter note B4, quarter note C5, quarter note B4, quarter note A4, quarter note G4, quarter note F4, quarter note E4, quarter note D4. Dynamics include *mf* and *mp*.

Tbn 3 Cheekum

**F**

**F** HAT

**G**

**H** HARMON MUTE

**J** Very soft accented legato

Repeat till fade away



# 15 CHEROKEE

Composed and Arr. by  
RAY NOBLE

4th Trombone

36

Moderato (not slow)

CUP MUTE

Musical staff with notes and rests, starting with a treble clef and a common time signature.

**A** *mf* CHORUS Opt. Vocal 16

Musical staff with a long horizontal line indicating a 16-measure rest.

**B** CUP MUTE

Musical staff with notes and rests, including dynamic markings like *mf* and *f*.

**C** 16

Musical staff with a long horizontal line indicating a 16-measure rest.

**D** OPEN

*mf* CUP MUTE

For Vocal only

Musical staff with notes and rests, including dynamic markings like *mf* and *f*.

Musical staff with notes and rests, including dynamic markings like *mf* and *f*.

Repeat till fade away

Charlie Barnett's Biggest Record Success  
15 CHEROKEE

Composed and Arr. by  
RAY NOBLE

Piano-Conductor

Moderato (not slow)  
Brass Solo

A CHORUS Opt. Vocal

Piano 2 Cherokee

My heart en- thrall- ing, Cher-

Rec. Dreams of sun-mer time,

lov-er time gone by, Through my

mem-ory so ten-der-ly and sigh! My

**D** Sweet Indian maid en- One day I'll

hold you in my arms fold you

PIANO, 3 chorokae

**E**

Guitar Solo 4 Bars

Cher-  
kae!

Handwritten musical notation for the first system, featuring a grand staff with treble and bass clefs, chords, and melodic lines.

**H**

Handwritten musical notation for the second system, starting with a box containing the letter 'H', followed by chords and a melodic line.

Handwritten musical notation for the third system, continuing the piece with chords and a melodic line.

**J** Repeat till fade away

Handwritten musical notation for the fourth system, which includes a double bar line and a repeat sign, indicating the 'Repeat till fade away' section.

Handwritten musical notation for the fifth system, continuing the piece with chords and a melodic line.

Handwritten musical notation for the sixth system, concluding the piece with chords and a melodic line.

# Drums 36

Charlie Barnett's Biggest Record Success

## 15 CHEROKEE

Composed and Arr. by  
RAY NOBLE

Moderato (not slow)  
BRUSHES

Musical staff for brushes, starting with a treble clef and a 2/4 time signature. It contains a sequence of notes and rests, ending with a double bar line and a fermata over the final note.

### A CHORUS (Opt. Vocal)

Musical staff for chorus section A, starting with a treble clef and a 2/4 time signature. It contains a sequence of notes and rests, ending with a double bar line and a fermata over the final note.

Musical staff for chorus section A, continuing the sequence of notes and rests.

Musical staff for chorus section A, including a boxed section labeled 'B' with a 4/4 time signature change.

Musical staff for chorus section A, continuing the sequence of notes and rests.

Musical staff for chorus section A, continuing the sequence of notes and rests.

### C

Musical staff for chorus section C, starting with a treble clef and a 2/4 time signature. It contains a sequence of notes and rests, ending with a double bar line and a fermata over the final note.

Musical staff for chorus section C, continuing the sequence of notes and rests.

Musical staff for chorus section C, continuing the sequence of notes and rests.

### D STICKS

Musical staff for sticks, starting with a treble clef and a 2/4 time signature. It contains a sequence of notes and rests, ending with a double bar line and a fermata over the final note.

Musical staff for sticks, continuing the sequence of notes and rests.

**E**

3

**F**

8

8

8

6

**G**

8

8

**H**

8

8

**J**

*Repeat till fade away*

8

8



36

Charlie Barnett's Biggest Record Success

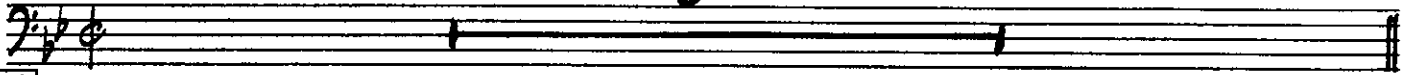
# 15 CHEROKEE

String Bass

Composed and Arr. by  
RAY NOBLE

Moderato (not slow)

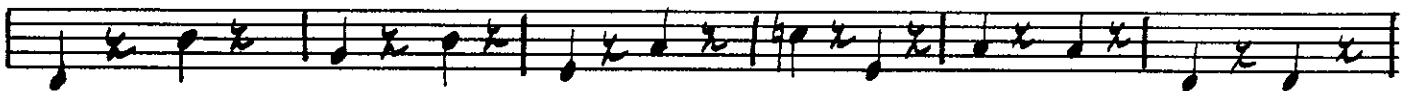
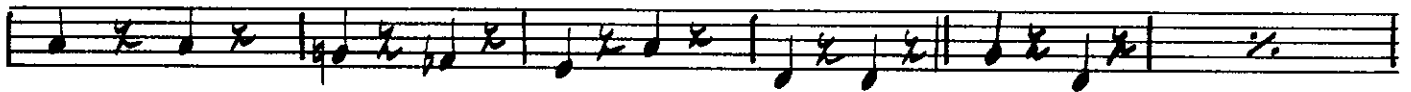
B



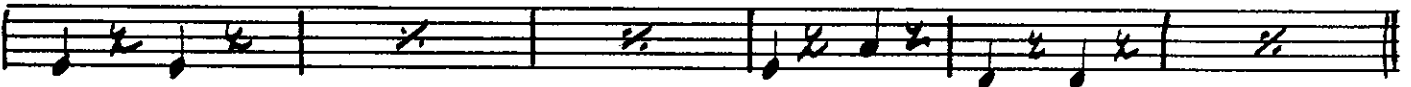
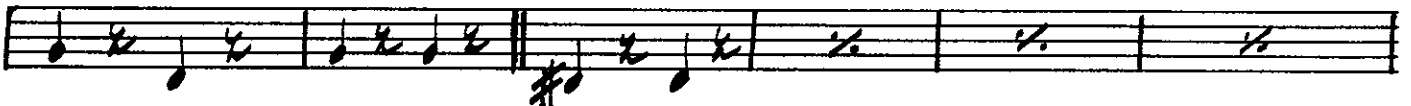
## A CHORUS (Opt. Vocal)



B



C

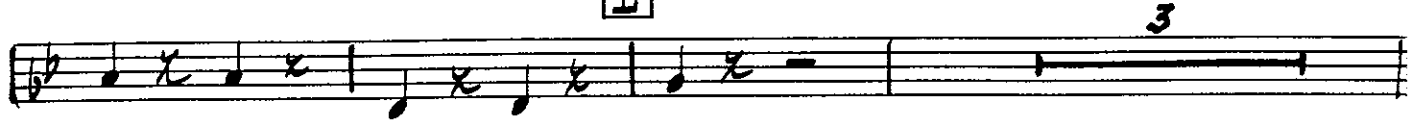


D

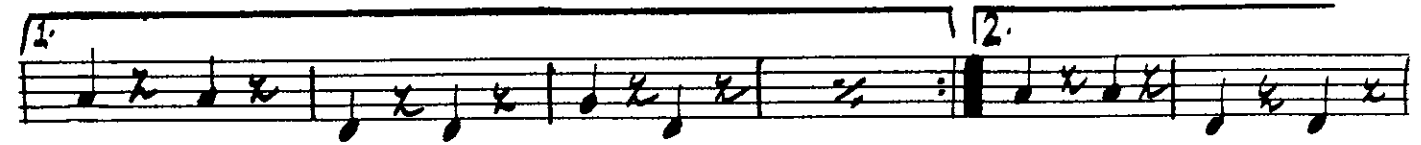


**E**

BASS CHECKER



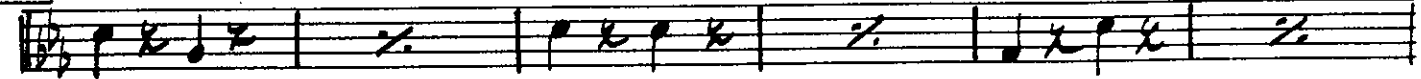
**F**



**G**



**H**



**J** Repeat till fade away



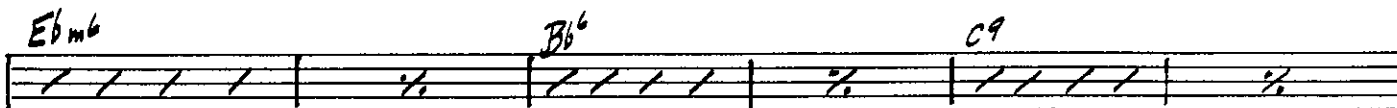
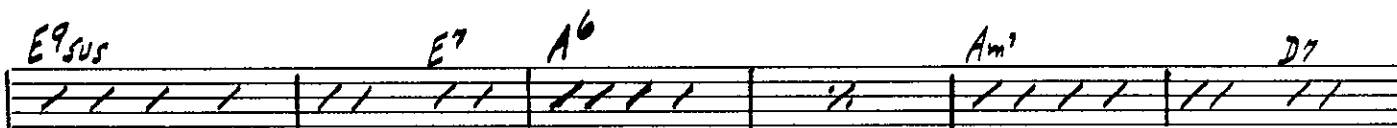
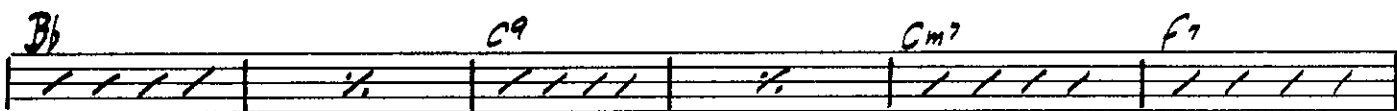
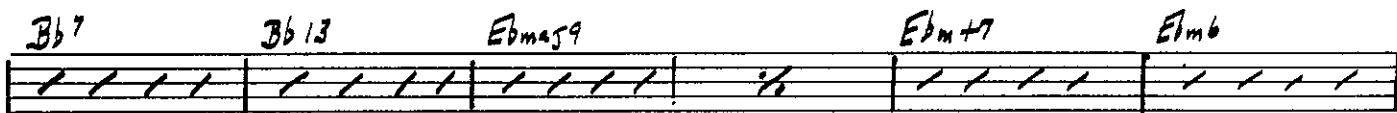
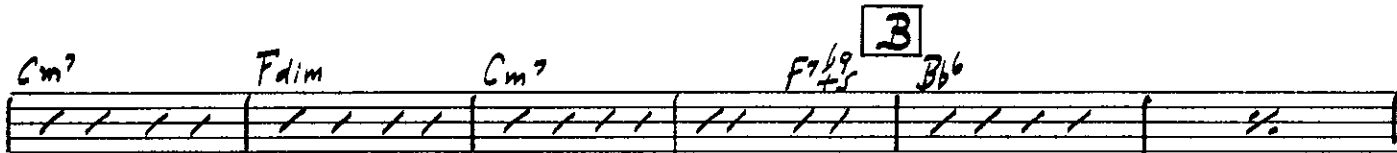
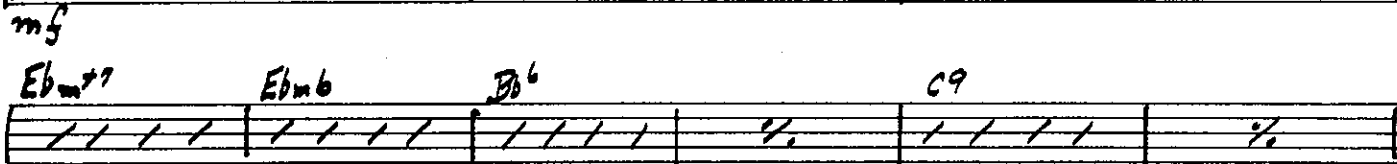
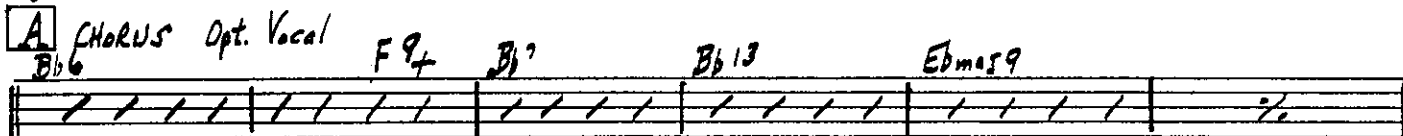
# 15 CHEROKEE

Composed and Arr. by  
RAY NOBLE

Guitar

# 36

Moderato (not slow)



Guitar chords

**E** Solo ad lib. ....

**E** Cm7 F9sus Bb6

**F** Bb6 Bb9 Ebmaj7

Ebm6 Bb C9

1. Cm7 F9 Bb6 2. Cm7 F9

**G** Bb6 B7 Emaj7 E6 E7

Em7 A7 Dmaj9 D6 D7 G7b9

Cmaj9 C6 C7 Cm7 F9 Bb9sus Bb7

**H** Eb6 Bb7+ Eb9sus Eb7 Abmaj7

Abm7+ Abm6 Eb F9

Fm7 Bb13 Eb **J** Eb6

Repeat till fade away

Eb7 Abmaj7 Abm7+ Abm6 Eb

Eb F9 Fm7 Bb9sus Eb